

GeneGnome⁵

Dedicated chemiluminescence imaging



Chemiluminescence is acknowledged as one of the most widely used applications for membrane-based protein and nucleic acid detection. The GeneGnome⁵ system from Syngene is a dedicated system for the exclusive capture of chemiluminescent blots.

The system's true 16 bit camera captures over 65,000 grey levels to rapidly provide you with blot images of unrivalled accuracy and sensitivity.

GeneGnome⁵ completely automates the process of imaging chemiluminescent samples. It provides superbly accurate results and is extremely easy to use, thanks to new, unique image analysis algorithms and powerful imaging hardware.



The GeneGnome⁵ offers you:

- Unique one button image capture
- High resolution 5.0m pixel camera
- Excellent signal to noise ratio
- Flexible binning options to increase sensitivity
- Programmable user configurations
- Networking for archiving options
- Fully automated analysis with GeneTools software

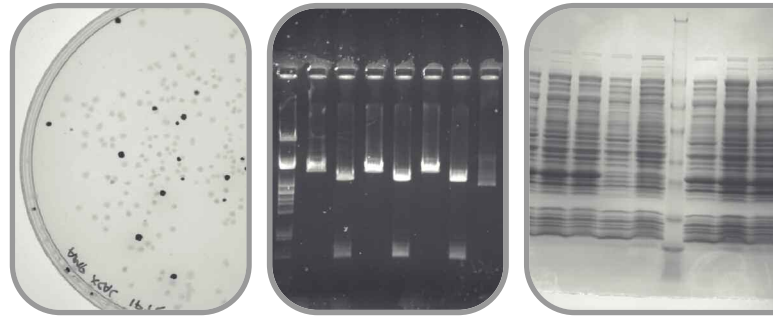
GeneGnome⁵ completely automates the process of imaging chemiluminescent samples. It provides superbly accurate results and is extremely easy to use, thanks to new, unique image analysis algorithms and powerful imaging hardware.

The GeneGnome⁵ has an extremely small footprint making it ideal for any laboratory, even when space is at a premium. The compact design places the camera very close to the sample improving the sensitivity over traditional darkroom based chemiluminescent imaging systems. Blots are placed in a drawer which automatically ejects once the image has been captured. The internal white light allows capture and multiplexing of colorimetric markers. The fully enclosed integral processor manages system controls, analysis and archiving to the internal hard-drive. An external monitor, keyboard and mouse connect to the system. Output ports include USB and Ethernet.

Syngene software aids 21 CFR, Part 11 compliance. IQ/OQ/PQ validation procedures are now available.

How you can use a GeneGnome⁵

The GeneGnome⁵ is a dedicated chemiluminescence imaging system which can produce images of blots using the most common chemiluminescence substrates including ECL[®], SuperSignal[®] and LumiGlo[®].



Features

Ergonomic, compact light tight unit

Automatic slide-out sample drawer

True 16 bit camera

Integral, super cooled camera

Fixed focus and aperture settings

Epi white illumination

Integral processor and software

Stunning performance

Benefits

Small footprint, minimal bench space

Minimal handling

Superb quantitative performance

Exceptional signal to noise performance

Minimal set-up procedures

Multiplex of colorimetric markers

A complete package

More than double the dynamic range of film

To meet your ever changing imaging needs, the exact specifications of our systems are constantly being upgraded. For the latest information, please check out our web site on www.syngene.com

All trademarks acknowledged



Distributore:

Via di Grotte Portella 6/8
00044 Frascati RM
Tel. 06 72632108
Fax 06 72676527

Syngene Europe and International Headquarters:

Beacon House Nuffield Road Cambridge
CB4 1TF UK Tel: +44 (0)1223 727123
Fax: +44 (0)1223 727101 email: sales@syngene.com

Syngene USA Headquarters:

5108 Pegasus Court Suite M Frederick
MD 21704 USA Tel: 800-686-4407/301-662-2863
Fax: 301-631-3977 email: ussales@syngene.com

Website: www.syngene.com

G.0038.02.11