

Presentazione Azienda



Shanghai ZJ Bio-Tech Co. Ltd. fondata nel 2001, è una "Company" di diagnostica molecolare, completamente focalizzata sullo sviluppo e vendita di Kits diagnostici in Real Time PCR. Ad oggi, il suo catalogo conta circa 140 Kits, la maggior parte dei quali CE e IVD, dedicati alle malattie infettive, all'oncologia, alle malattie genetiche, tutti utilizzabili sulla maggior parte delle piattaforme in commercio.



VIRUS HIV-2



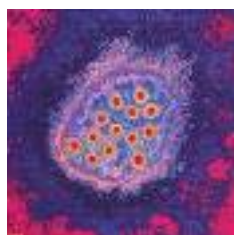
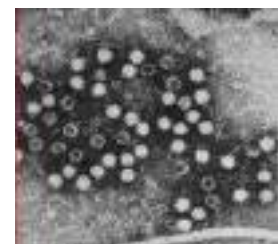
VIRUS HIV-1



VIRUS EPATITE C



VIRUS EPATITE E



VIRUS EPATITE A

Kit per la determinazione dei virus delle epatiti

Kit sensibili e riproducibili per la determinazione dell'agente eziologico delle epatiti virali. Le epatiti virali raggruppano diverse infezioni che colpiscono il fegato che, pur avendo quadri clinici simili, differiscono dal punto di vista epidemiologico ed immuno-patogenetico. Ad oggi sono noti 5 tipi di epatite determinati dai cosiddetti virus epatitici maggiori : epatite A (HAV), epatite B (HBV), epatite C (HCV), epatite Delta (HDV), epatite E (HEV). A questi si aggiungono virus recentemente isolati , quali il virus dell'epatite G (HGV) e il virus TT(TTV).

Codice	Real Time	Descrizione	Acido Nucleico	Confezione (tests/kit)
HR-0001-01	I , II	HAV Real Time RT-PCR Kit *CE Marked	RNA	25
HR-0001-02	III , IV			
HD-0002-01	I , II	HBV Quantitative Real Time PCR Kit	DNA	25
HD-0002-02	III , IV			
HD-0003-01	I	HBV Quantitative & YMDD Mutation Real Time PCR Kit	DNA	25
HD-0003-02	II			
HD-0003-03	III			
HD-0003-04	IV			
HD-0004-01	I , II	HBV Adefovir-resistant Mutants Real Time PCR Kit	DNA	25
HD-0004-04	III , IV			
HD-0005-01	I , II	HBV Precore Site 1896 Mutation Real Time PCR Kit	DNA	25
HD-0005-04	III , IV			
HD-0006-01	I	HBV Genotype B&C Real Time PCR Kit	DNA	25
HD-0006-02	II			
HD-0006-03	III			
HD-0006-04	IV			
HD-0007-01	I , II	HBV cccDNA Real Time PCR Kit	DNA	25
HD-0007-02	III , IV			
HR-0008-01	I , II	HCV Real Time RT-PCR Kit	RNA	25
HR-0008-02	III , IV			
HR-0009-01	I , II	HCV Genotype Real Time RT-PCR Kit	RNA	25
HR-0009-02	III , IV			
HR-0010-01	I , II	HDV Real Time RT-PCR Kit	RNA	25
HR-0010-02	III , IV			
HR-0011-01	I , II	HEV Real Time RT-PCR Kit *CE Marked	RNA	25
HR-0011-02	III , IV			
HR-0012-01	I , II	HGV Real Time RT-PCR Kit *CE Marked	RNA	25
HR-0012-02	III , IV			
HD-0013-01	I , II	Transfusion-transmitted Virus (TTV) Real Time PCR Kit *CE Marked	DNA	25
HD-0013-02	III , IV			

Strumenti Real Time

(I) LightCycler 1.0; (Internal Control is not included for this system)

(II) LightCycler2.0

(III) PE5700; MJ-Opticon etc. single color systems;

(IV)ABI7000; ABI7300; ABI7500; ABI7900; ABI StepOne, StepOne plus, MJ-Opticon2; MJ-chromo4; MX3000P; MX3005P; Smart CyclerII; Rotor-Gene6000, LightCyclerR480; iCycler iQ4; iCycler iQ5 etc, multi-color systems.

Kit per la determinazione di patogeni delle malattie sessualmente trasmissibili

Kit per la rilevazione di patogeni determinanti delle malattie sessualmente trasmissibili che vengono trasmesse quindi durante l'atto e il contatto sessuale

Codice	Real Time	Descrizione	Acido Nucleico	Confezione (tests/kit)
SD-0014-01	I , II	Neisseria Gonorrhoeae (NG) Real Time PCR Kit	DNA	25
SD-0014-02	III , IV	*CE Marked		
SD-0015-01	I , II	Ureaplasma Urealyticum (UU) Real Time PCR Kit	DNA	25
SD-0015-02	III , IV	*CE Marked		
SD-0016-01	I , II	Chlamydia Trachomatis (CT) Real Time PCR Kit	DNA	25
SD-0016-02	III , IV			
SD-0025-01	II	CT&NG RealTime PCR Kit	DNA	25
SD-0025-02	IV			
SD-0136-01	I , II	HSV I&II typing RealTime PCR Kit	DNA	25
SD-0136-02	III , IV	*CE Marked		
SD-0017-01	I , II	HSV□&□ Real Time PCR Kit	DNA	25
SD-0017-02	III , IV	*CE Marked		
SD-0018-01	I , II	HPV 6&11 Real Time PCR Kit	DNA	25
SD-0018-02	III , IV	*CE Marked		
SD-0019-01	I , II	Treponema Pallidum (TP) Real Time PCR Kit	DNA	25
SD-0019-02	III , IV	*CE Marked		
SR-0020-01	I , II	HIV-1 Real Time RT-PCR Kit	RNA	25
SR-0020-02	III , IV			
SR-0021-01	I , II	HIV-2 Real Time RT-PCR Kit	RNA	25
SR-0021-02	III , IV			

Strumenti Real Time

(I) LightCycler 1.0; (Internal Control is not included for this system)

(II) LightCycler2.0

(III) PE5700; MJ-Opticon etc. single color systems;

(IV)ABI7000; ABI7300; ABI7500; ABI7900; ABI StepOne, StepOne plus, MJ-Opticon2; MJ-chromo4; MX3000P; MX3005P; Smart CyclerII; Rotor-Gene6000, LightCyclerR480; iCycler iQ4; iCycler iQ5 etc, multi-color systems.

Kit di rilevazione di patogeni virali per il trapianto d'organi

Codice	Real Time	Descrizione	Acido Nucleico	Confezione (tests/kit)
OD-0022-01	I , II	HCMV Real Time PCR Kit	DNA	25
OD-0022-02	III , IV			
OD-0023-01	I , II	EBV Real Time PCR Kit	DNA	25
OD-0023-02	III , IV			
OD-0024-01	I , II	Varicella Zoster Virus (VZV) Real Time PCR Kit	DNA	25
OD-0024-02	III , IV			
SD-0017-01	I , II	HSV□&□ Real Time PCR Kit	DNA	25
SD-0017-02	III , IV			
OD-0026-01	I , II	Human Parvovirus (B19) Real Time PCR Kit	DNA	25
OD-0026-02	III , IV			
OD-0102-01	I , II	Polyomavirus BK (PBK) Real Time PCR Kit	DNA	25
OD-0102-02	III , IV			

Kit correlati a patologie tumorali

TR-0029-01	I , II	AFP mRNA Expression in Peripheral Blood Real Time RT-PCR Kit	RNA	25
TR-0029-02	III , IV			
TD-0030-01	I , II	HPV 16&18 Real Time PCR Kit	DNA	25
TD-0030-02	III , IV			
TD-0031-01	I , II	Uterine Cervix Cancer of High-risk HPV Genotype Related Real-time PCR kit (13 Types of HPV Genotypes)	DNA	25
TD-0031-02	III , IV			
OD-0023-01	I , II	EBV Real Time PCR Kit	DNA	25
OD-0023-02	III , IV			
TR-0126-01	I , II	Leukemia BCR-ABL Fusion Gene Real Time PCR Kit	RNA	25
TR-0126-02	III , IV			
TR-0126-03	I , II	Leukemia m -BCR Fusion Gene Real Time PCR Kit	RNA	25
TR-0126-04	III , IV			
TR-0126-05	I , II	Leukemia μ-BCR Fusion Gene Real Time PCR Kit	RNA	25
TR-0126-06	III , IV			
TR-0126-07	I , II	Leukemia M -BCR Fusion Gene Real Time PCR Kit	RNA	25
TR-0126-08	III , IV			

Strumenti Real Time

(I) LightCycler 1.0; (Internal Control is not included for this system)

(II) LightCycler2.0

(III) PE5700; MJ-Opticon etc. single color systems;

(IV)ABI7000; ABI7300; ABI7500; ABI7900; ABI StepOne, StepOne plus, MJ-Opticon2; MJ-chromo4; MX3000P; MX3005P; Smart CyclerII; Rotor-Gene6000, LightCyclerR480; iCycler iQ4; iCycler iQ5 etc, multi-color systems.

Kit per la rilevazione di patogeni nelle infezioni intestinali

Kit per la determinazione di agenti eziologici, batterici e virali, che causano le infezioni intestinali. Gli agenti eziologici più frequenti nelle infezioni intestinali sono: Shigella, Salmonella, Campylobacter, E coli (EPEC), rotavirus, norovirus, adenovirus, Astrovirus

Codice	Real Time	Descrizione	Acido Nucleico	Confezione (tests/kit)
DD-0032-01	I , II	Vibrio Cholera Real Time PCR Kit	DNA	25
DD-0032-02	III , IV	*CE Marked		
DD-0122-01	I , II	Vibrio Cholera (Gene CTX) Real Time PCR Kit	DNA	25
DD-0122-02	III , IV	*CE Marked		
DD-0123-01	I , II	Vibrio Cholera 01 Real Time PCR Kit	DNA	25
DD-0123-02	III , IV	*CE Marked		
DD-0124-01	I , II	Vibrio Cholera 0139 Real Time PCR Kit	DNA	25
DD-0124-02	III , IV	*CE Marked		
DD-0033-01	I , II	Shigella Real Time PCR Kit	DNA	25
DD-0033-02	III , IV	*CE Marked		
DD-0034-01	I , II	Salmonella Real Time PCR Kit	DNA	25
DD-0034-02	III , IV	*CE Marked		
DD-0035-02	II	Salmonella & Shigella Real Time PCR Kit	DNA	25
DD-0035-04	IV	*CE Marked		
DD-0036-01	I , II	Salmonella Typhi Real Time PCR Kit	DNA	25
DD-0036-02	III , IV	*CE Marked		
DD-0037-01	I , II	Salmonella paratyphi Real Time PCR Kit	DNA	25
DD-0037-02	III , IV	*CE Marked		
DD-0038-01	I , II	Vibrio Parahaemolyticus Real Time PCR Kit	DNA	25
DD-0038-02	III , IV	*CE Marked		
DD-0091-01	I , II	Enteropathogenic E. Coli (EPEC) Real Time PCR Kit	DNA	25
DD-0091-02	III , IV	*CE Marked		
DD-0092-01	I , II	Enterotoxigenic E. Coil (ETEC) Real Time PCR Kit	DNA	25
DD-0092-02	III , IV	*CE Marked		
DD-0093-01	I , II	Enteroinvasive E. Coli (EIEC) Real Time PCR Kit	DNA	25
DD-0093-02	III , IV	*CE Marked		
DD-0094-01	I , II	Enteroadhesive E. Coli (EAEC) Real Time PCR Kit	DNA	25
DD-0094-02	III , IV	*CE Marked		
DD-0095-01	I , II	Enterohemorrhagic E. Coli (EHEC) Real Time PCR Kit	DNA	25
DD-0095-02	III , IV	*CE Marked		
DD-0134-01	I , II	Enterobacter sakazaii Real Time PCR Kit	DNA	25
DD-0134-02	III , IV	*CE Marked		

Strumenti Real Time

(I) LightCycler 1.0; (Internal Control is not included for this system)

(II) LightCycler2.0

(III) PE5700; MJ-Opticon etc. single color systems;

(IV)ABI7000; ABI7300; ABI7500; ABI7900; ABI StepOne, StepOne plus, MJ-Opticon2; MJ-chromo4; MX3000P; MX3005P; Smart CyclerII; Rotor-Gene6000, LightCyclerR480; iCycler iQ4; iCycler iQ5 etc, multi-color systems.

Kit per la rilevazione di patogeni nelle infezioni intestinali

Codice	Real Time	Descrizione	Acido Nucleico	Confezione (tests/kit)
DD-0039-01	I , II	E. Coli O157: (H7) Real Time PCR Kit	DNA	25
DD-0039-02	III , IV	*CE Marked		
DD-0040-01	I , II	Campylobacter Jejuni Real Time PCR Kit	DNA	25
DD-0040-02	III , IV	*CE Marked		
DD-0041-01	I , II	Staphylococcus Aureus Real Time PCR Kit	DNA	25
DD-0041-02	III , IV	*CE Marked		
DD-0096-01	I , II	Methicillin-resistant Staphylococcus Aureus (MRSA) Real Time PCR Kit	DNA	25
DD-0096-02	III , IV	*CE Marked		
DD-0125-01	I , II	Vancomycin-resistant Staphylococcus Aureus (VRSA) Real Time	DNA	25
DD-0125-02	III , IV	*CE Marked		
DD-0042-01	I , II	Bacillus Cereus Real Time PCR Kit	DNA	25
DD-0042-02	III , IV	*CE Marked		
DD-0043-01	I , II	Adenovirus Real Time PCR Kit	DNA	25
DD-0043-02	III , IV	*CE Marked		
DR-0044-01	I , II	Rotavirus Real Time RT-PCR Kit	RNA	25
DR-0044-02	III , IV	*CE Marked		
DR-0045-01	I , II	Norwalk virus Real Time RT-PCR Kit	RNA	25
DR-0045-02	III , IV	*CE Marked		

Strumenti Real Time

(I) LightCycler 1.0; (Internal Control is not included for this system)

(II) LightCycler2.0

(III) PE5700; MJ-Opticon etc. single color systems;

(IV)ABI7000; ABI7300; ABI7500; ABI7900; ABI StepOne, StepOne plus, MJ-Opticon2; MJ-chromo4; MX3000P; MX3005P; Smart CyclerII; Rotor-Gene6000, LightCyclerR480; iCycler iQ4; iCycler iQ5 etc, multi-color systems.

Kit di rilevazione di batteri patogeni nelle Derrate Alimentari

Sensibile alle normative HACCP il seguente pannello consente di rilevare i batteri patogeni più diffusi e pericolosi nella contaminazione delle derrate alimentari.

Codice	Real Time	Descrizione	Acido Nucleico	Confezione (tests/kit)
DD-0032-01	I , II	Cholera Vibriion Real Time PCR Kit	DNA	25
DD-0032-02	III , IV	*CE Marked		
DD-0033-01	I , II	Bacterium Dysentersae Real Time PCR Kit	DNA	25
DD-0033-02	III , IV	*CE Marked		
DD-0034-01	I , II	Salmonella Real Time PCR Kit	DNA	25
DD-0034-02	III , IV	*CE Marked		
DD-0038-01	I , II	Vibrio Parahaemolyticus Real Time PCR Kit	DNA	25
DD-0038-02	III , IV	*CE Marked		
DD-0039-01	I , II	Bacillus Coli O157 : H7 Real Time PCR Kit	DNA	25
DD-0039-02	III , IV	*CE Marked		
DD-0040-01	I , II	Campylobacter Jejuni Real Time PCR Kit	DNA	25
DD-0040-02	III , IV	*CE Marked		
DD-0041-01	I , II	Staphylococcus Aureus Real Time PCR Kit	DNA	25
DD-0041-02	III , IV	*CE Marked		
DD-0127-01	I , II	Yersinia Enterocolitica Real Time PCR Kit	DNA	25
DD-0127-02	III , IV	*CE Marked		
DD-0128-01	I , II	Listeria Monocytogenes Real Time PCR Kit	DNA	25
DD-0128-02	III , IV	*CE Marked		
DD-0129-01	I , II	Vibrio Vulnificus Real Time PCR Kit	DNA	25
DD-0129-02	III , IV	*CE Marked		
DD-0130-01	I , II	Vibrio Alginolyticus Real Time PCR Kit	DNA	25
DD-0130-02	III , IV	*CE Marked		

Strumenti Real Time

(I) LightCycler 1.0; (Internal Control is not included for this system)

(II) LightCycler2.0

(III) PE5700; MJ-Opticon etc. single color systems;

(IV)ABI7000; ABI7300; ABI7500; ABI7900; ABI StepOne, StepOne plus, MJ-Opticon2; MJ-chromo4; MX3000P; MX3005P; Smart CyclerII; Rotor-Gene6000, LightCyclerR480; iCycler iQ4; iCycler iQ5 etc, multi-color systems.

Kit di rilevazione di virus e batteri veicolati tramite passaggi respiratori

In questa peculiare branca la Shanghai ZJ presenta il più vasto pannello mondiale nel settore, con test per la rilevazione delle più diffuse patologie influenzali come anche delle più esotiche, e rilevazione di patologie dovute ai nuovi flussi migratori come la Tubercolosi e sue varianti

Codice	Real Time	Descrizione	Acido Nucleico	Confezione (tests/kit)
RR-0046-01	I , II	SARS Real Time RT-PCR Kit	RNA	25
RR-0046-02	III , IV	*CE Marked		
RR-0047-01	I , II	Avian Influenza virus Real Time RT-PCR Kit	RNA	25
RR-0047-02	III , IV	*CE Marked		
RR-0204-01	I , II	Avian Influenza virus H5 Real Time RT-PCR Kit	RNA	25
RR-0204-02	III , IV	*CE Marked		
RR-0048-01	I , II	Avian Influenza virus H5N1 Real Time RT-PCR Kit	RNA	25
RR-0048-02	III , IV	*CE Marked		
RR-0049-01	I , II	Avian Influenza virus H7 Real Time RT-PCR Kit	RNA	25
RR-0049-02	III , IV	*CE Marked		
RR-0050-01	I , II	Avian Influenza virus H9 Real Time RT-PCR Kit	RNA	25
RR-0050-02	III , IV	*CE Marked		
RR-0051-01	I , II	Influenza virus A Real Time RT-PCR Kit	RNA	25
RR-0051-02	III , IV	*CE Marked		
RR-0052-01	I , II	Influenza virus A 1 Real Time RT-PCR Kit	RNA	25
RR-0052-02	III , IV	*CE Marked		
RR-0052-03	I , II	Influenza virus A 3 Real Time RT-PCR Kit	RNA	25
RR-0052-04	III , IV	*CE Marked		
RR-0053-01	I , II	Influenza virus B Real Time RT-PCR Kit	RNA	25
RR-0053-02	III , IV	*CE Marked		
RR-0097-01	II	Influenza virus A&B Real Time RT-PCR Kit	RNA	25
RR-0097-02	IV	*CE Marked		

Strumenti Real Time

(I) LightCycler 1.0; (Internal Control is not included for this system)

(II) LightCycler2.0

(III) PE5700; MJ-Opticon etc. single color systems;

(IV)ABI7000; ABI7300; ABI7500; ABI7900; ABI StepOne, StepOne plus, MJ-Opticon2; MJ-chromo4; MX3000P; MX3005P; Smart CyclerII; Rotor-Gene6000, LightCyclerR480; iCycler iQ4; iCycler iQ5 etc, multi-color systems.

Codice	Real Time	Descrizione	Acido Nucleico	Confezione (tests/kit)
RR-0054-01	I , II	Measles Virus Real Time RT-PCR Kit	RNA	25
RR-0054-02	III , IV	*CE Marked		
RR-0055-01	I , II	Rubella Virus Real Time RT-PCR Kit	RNA	25
RR-0055-02	III , IV			
OD-0024-01	I , II	Varicella Zoster Virus (VZV) Real Time PCR Kit	DNA	25
OD-0024-02	III , IV	*CE Marked		
RR-0056-01	I , II	Mumps Virus Real Time RT-PCR Kit	RNA	25
RR-0056-02	III , IV	*CE Marked		
RR-0098-01	I , II	Respiratory Syncytial Virus (RSV) Real Time RT-PCR Kit	RNA	25
RR-0098-02	III , IV	*CE Marked		
DD-0043-01	I , II	Adenovirus Real Time PCR Kit	DNA	25
DD-0043-02	III , IV	*CE Marked		
RD-0057-01	I , II	Legionella Pneumophila Real Time PCR Kit	DNA	25
RD-0057-02	III , IV	*CE Marked		
RD-0121-01	I , II	Hemophilus Influenza B Real Time PCR Kit	DNA	25
RD-0121-02	III , IV	*CE Marked		
RD-0058-01	I , II	Meningococcus Real Time PCR Kit	DNA	25
RD-0058-02	III , IV	*CE Marked		
RD-0059-01	I , II	Streptococcus Pyogenes Real Time PCR Kit	DNA	25
RD-0059-02	III , IV	*CE Marked		
RD-0060-01	I , II	Mycobacterium Tuberculosis Real Time PCR Kit	DNA	25
RD-0060-02	III , IV	*CE Marked		
RD-0061-01	I , II	Pertussis Real Time PCR Kit	DNA	25
RD-0061-02	III , IV	*CE Marked		
RD-0062-01	I , II	Bacillus Diphtheriae Real Time PCR Kit	DNA	25
RD-0062-02	III , IV	*CE Marked		
RD-0131-01	I , II	Human Bocavirus (HBoV) Real Time PCR Kit	DNA	25
RD-0131-02	III , IV	*CE Marked		
RD-0099-01	I , II	Chlamydia Pneumoniae (CP) Real Time PCR Kit	DNA	25
RD-0099-02	III , IV			
RD-0100-01	I , II	Mycoplasma Pneumoniae (MP) Real Time PCR Kit	DNA	25
RD-0100-02	III , IV	*CE Marked		
YF-RR-0138-02	III , IV	New Influenza A Virus Real Time RT-PCR Panel	RNA	25
		*CE Marked		
YF-RR-0139-01	I,II	New Influenza A Virus (H1N1) Real Time RT-PCR Kit	RNA	25
YF-RR-0139-02	III , IV	*CE Marked		

Strumenti Real Time

(I) LightCycler 1.0; (Internal Control is not included for this system)

(II) LightCycler2.0

(III) PE5700; MJ-Opticon etc. single color systems;

(IV)ABI7000; ABI7300; ABI7500; ABI7900; ABI StepOne, StepOne plus, MJ-Opticon2; MJ-chromo4; MX3000P; MX3005P; Smart CyclerII; Rotor-Gene6000, LightCyclerR480; iCycler iQ4; iCycler iQ5 etc, multi-color systems.

Kit di Rilevazione di patogeni veicolati da Insetti

Questo pannello è dedicato alla rilevazione di malattie causate da patogeni veicolate da insetti, che presentano un'alta diffusione planetaria come la Malaria ed il Dengue ed altre pericolose febbri emorragiche.

Codice	Real Time	Descrizione	Acido Nucleico	Confezione (tests/kit)
ER-0101-01	I , II	Dengue Virus General-type Real Time RT-PCR Kit	RNA	25
ER-0101-02	III , IV	*CE Marked		
ER-0133-01	I , II	Crimean-Congo Hemorrhagic Fever Virus (CCHFV) Real Time RT-PCR Kit	RNA	25
ER-0133-02	III , IV	*CE Marked	RNA	25test/kit
ER-0063-01	I , II	Dengue Virus I Real Time RT-PCR Kit	RNA	25
ER-0063-02	III , IV	*CE Marked		
ER-0063-03	I , II	Dengue Virus II Real Time RT-PCR Kit	RNA	25
ER-0063-04	III , IV	*CE Marked		
ER-0064-01	I , II	Dengue Virus III Real Time RT-PCR Kit	RNA	25
ER-0064-02	III , IV	*CE Marked		
ER-0064-03	I , II	Dengue Virus IV Real Time RT-PCR Kit	RNA	25
ER-0064-04	III , IV	*CE Marked		
ER-0065-01	I , II	Japanese Encephalitis Virus (JEV) Real Time RT-PCR Kit	RNA	25
ER-0065-02	III , IV	*CE Marked		
ED-0066-01	I , II	Malaria Parasite Real Time PCR Kit	DNA	25
ED-0066-02	III , IV	*CE Marked		
ER-0067-01	I , II	Chikungunya Virus Real Time RT-PCR Kit	RNA	25
ER-0067-02	III , IV	*CE Marked		
ER-0068-01	I , II	West Nile virus Real Time RT-PCR Kit	RNA	25
ER-0068-02	III , IV	*CE Marked		

Strumenti Real Time

(I) LightCycler 1.0; (Internal Control is not included for this system)

(II) LightCycler2.0

(III) PE5700; MJ-Opticon etc. single color systems;

(IV)ABI7000; ABI7300; ABI7500; ABI7900; ABI StepOne, StepOne plus, MJ-Opticon2; MJ-chromo4; MX3000P; MX3005P; Smart CyclerII; Rotor-Gene6000, LightCyclerR480; iCycler iQ4; iCycler iQ5 etc, multi-color systems.

Kit per la rilevazione di vettori delle Zoonosi

Questo pannello è dedicato a tutte quelle malattie infettive e parassitarie degli animali che possono essere trasmessa all'uomo direttamente (contatto con la pelle, peli, uova, sangue o secrezioni) o indirettamente (tramite altri organismi vettori o ingestione di alimenti infetti). Tra queste sono presenti anche Patogeni come l'Antrace di elevato interesse primario per il bioterrorismo.

Cat. No.	Instrument	Product Description	Nucleic acid	Packing (tests/kit)
RR-0047-01	I , II	Avian Influenza Virus Real Time RT-PCR Kit	RNA	25
RR-0047-02	III , IV	*CE Marked		
RR-0048-01	I , II	Avian Influenza Virus H5N1 Real Time RT-PCR Kit	RNA	25
RR-0048-02	III , IV	*CE Marked		
RR-0049-01	I , II	Avian Influenza Virus H7 Real Time RT-PCR Kit	RNA	25
RR-0049-02	III , IV	*CE Marked		
RR-0050-01	I , II	Avian Influenza Virus H9 Real Time RT-PCR Kit	RNA	25
RR-0050-02	III , IV	*CE Marked		
ZD-0069-01	I , II	Streptococcus Suis Real Time PCR Kit	DNA	25
ZD-0069-02	III , IV	*CE Marked		
ZR-0070-01	I , II	Rabies Virus Real Time RT-PCR Kit	RNA	25
ZR-0070-02	III , IV	*CE Marked		
ZD-0071-01	I , II	Brucella Real Time PCR Kit	DNA	25
ZD-0071-02	III , IV	*CE Marked		
ZR-0072-01	I , II	Foot-and-Mouth Disease Virus (FMDV) Real Time RT-PCR Kit	RNA	25
ZR-0072-02	III , IV	*CE Marked		
ZD-0073-01	I , II	Bacillus Anthrax Real Time PCR Kit	DNA	25
ZD-0073-02	III , IV	*CE Marked		
ZD-0074-01	I , II	Leptospire Real Time PCR Kit	DNA	25
ZD-0074-02	III , IV	*CE Marked		
ZD-0075-01	I , II	Toxoplasmosis Parasite Real Time PCR Kit	DNA	25
ZD-0075-02	III , IV			
ZD-0076-01	I , II	Monkeypox Virus Real Time PCR Kit	DNA	25
ZD-0076-02	III , IV	*CE Marked		

Strumenti Real Time

(I) LightCycler 1.0; (Internal Control is not included for this system)

(II) LightCycler2.0

(III) PE5700; MJ-Opticon etc. single color systems;

(IV)ABI7000; ABI7300; ABI7500; ABI7900; ABI StepOne, StepOne plus, MJ-Opticon2; MJ-chromo4; MX3000P; MX3005P; Smart CyclerII; Rotor-Gene6000, LightCyclerR480; iCycler iQ4; iCycler iQ5 etc, multi-color systems.

Altri

Cat. No.	Instrument	Product Description	Nucleic acid	Packing (tests/kit)
QR-0078-01	I, II	Poliovirus 1 Real Time RT-PCR Kit	RNA	25
QR-0078-02	III, IV	*CE Marked		
QR-0079-01	I, II	Poliovirus 2 Real Time RT-PCR Kit	RNA	25
QR-0079-02	III, IV	*CE Marked		
QR-0080-01	I, II	Poliovirus 3 Real Time RT-PCR Kit	RNA	25
QR-0080-02	III, IV	*CE Marked		
QR-0202-01	I, II	Coxsackie Virus Real Time RT-PCR Kit	RNA	25
QR-0202-02	III, IV	*CE Marked		
QR-0081-01	I, II	Coxsackie Virus A24 Real Time RT-PCR Kit	RNA	25
QR-0081-02	III, IV	*CE Marked		
QD-0082-01	I, II	Pneumocystis Carinii Real Time PCR Kit	DNA	25
QD-0082-02	III, IV	*CE Marked		
QD-0085-01	I, II	Schistosomiasis Real Time PCR Kit	DNA	25
QD-0085-02	III, IV	*CE Marked		
QR-0205-01	I, II	Enterovirus 71(EV71) Real Time RT-PCR	RNA	25
QR-0205-02	III, IV	*CE Marked		
QR-0206-01	I, II	Enterovirus Real Time RT-PCR Kit	RNA	25
QR-0206-02	III, IV	*CE Marked		
QR-0207-01	I, II	Coxsackie virus A16 Real Time RT-PCR Kit	RNA	25
QR-0207-02	III, IV	*CE Marked		
QR-0208-01	I, II	Enterovirus 70(EV70) Real Time RT-PCR Kit	RNA	25
QR-0208-02	III, IV	*CE Marked		
QR-0087-01	I, II	Hantavirus Renal Syndrome General-type I&II Real Time RT-	RNA	25
QR-0087-02	III, IV	*CE Marked		
QR-0089-01	I	Hantavirus Renal Syndrome Typing I&II	RNA	25
QR-0089-02	II	Real Time RT-PCR Kit		
QR-0089-03	III	*CE Marked		
QR-0089-04	IV			
QR-0090-01	I, II	Hantavirus Pulmonary Syndrome Real Time RT-PCR Kit	RNA	25
QR-0090-02	III, IV	*CE Marked		
QD-0203-01	I, II	Pseudomonas Aeruginosa Real Time RT-PCR Kit	DNA	25
QD-0203-02	III, IV	*CE Marked		
QR-0132-01	I, II	GAPDH (Human) Real Time RT-PCR Kit	RNA	25
QR-0132-02	III, IV	*CE Marked		
QR-0210-03	PCR Instrument	EV-U,EV71 and CA16 PCR Kit	RNA	25

Strumenti Real Time

(I) LightCycler 1.0; (Internal Control is not included for this system)

(II) LightCycler2.0

(III) PE5700; MJ-Opticon etc. single color systems;

(IV)ABI7000; ABI7300; ABI7500; ABI7900; ABI StepOne, StepOne plus, MJ-Opticon2; MJ-chromo4; MX3000P; MX3005P; Smart CyclerII; Rotor-Gene6000, LightCyclerR480; iCycler iQ4; iCycler iQ5 etc, multi-color systems.